



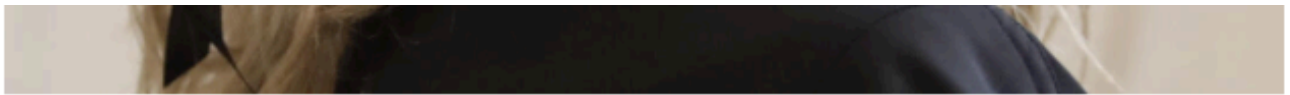
Beauty Exclusive

# Aurélie Payen: Cara Delevingne makeup artist explained how to copy her look



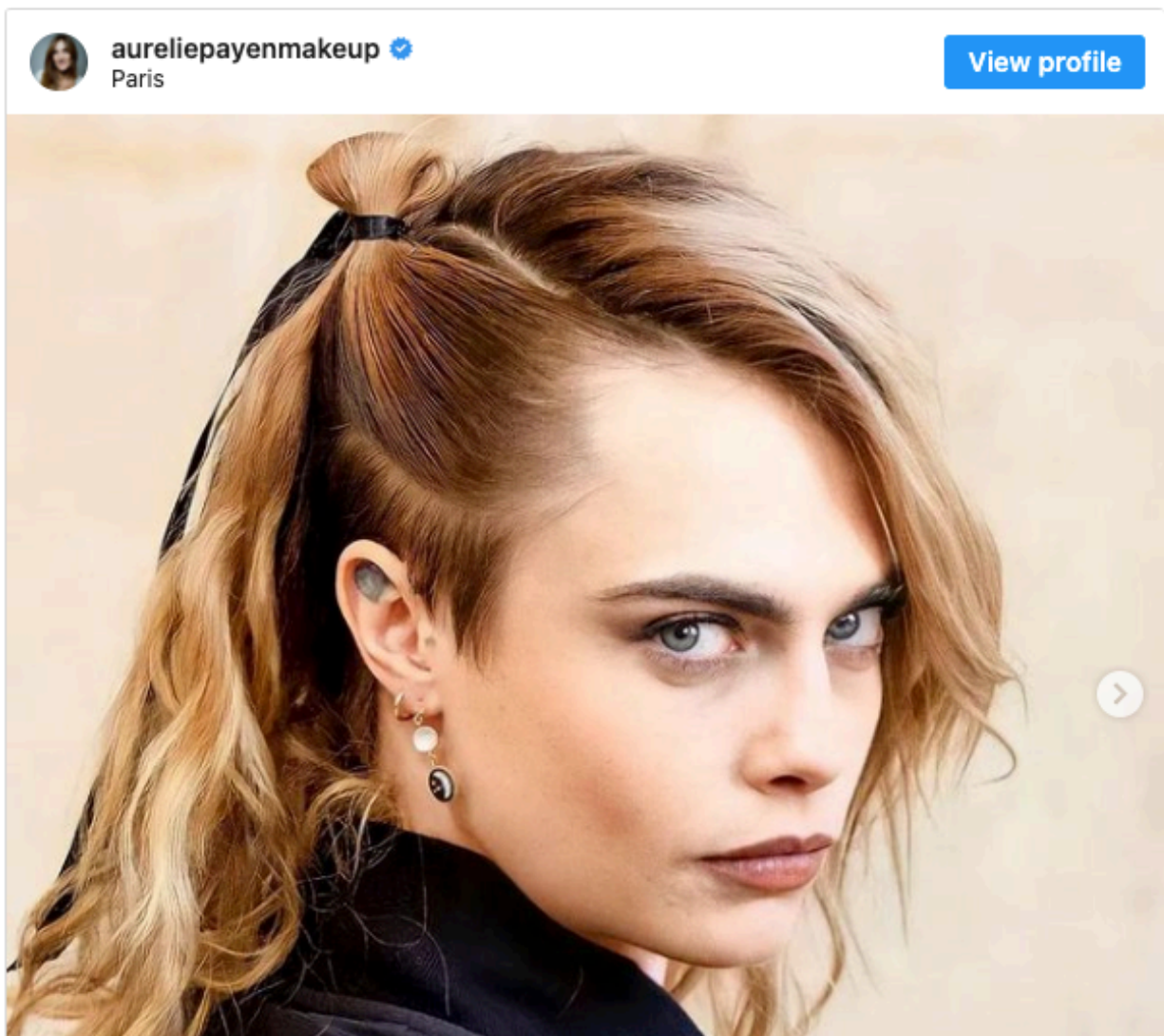
Christina Anastasia Chroni

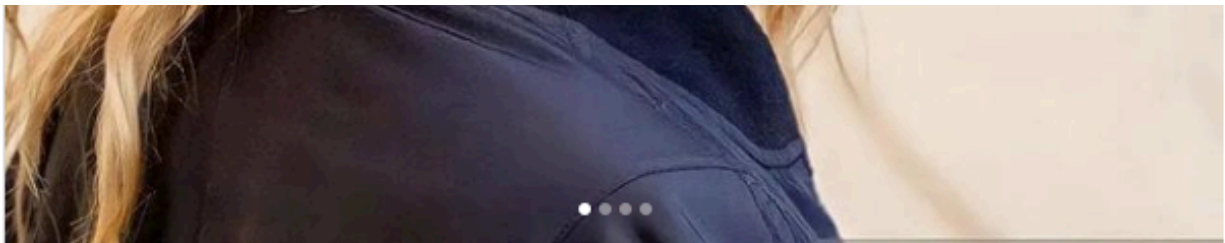




***When the fashion weeks are in progress, we look not only at the catwalks but also at the super - hot guests. One of them was Cara Delevingne , who was at the Dior show and - for us - stole the show even from the show itself . So we talked to Aur é lie Payen , her makeup artist to find out everything!***

Aurélie Payen is an artist I have talked to again ( [here Christina, Time](#) ). She is responsible for all the wonderful looks of Lily Collins in the Netflix series "Emily in Paris" and I had contacted her in order to find out the details and to transfer them to you. I did the same only now that before Emily, we talked about Cara.





[View more on Instagram](#)



254 likes



Add a comment...



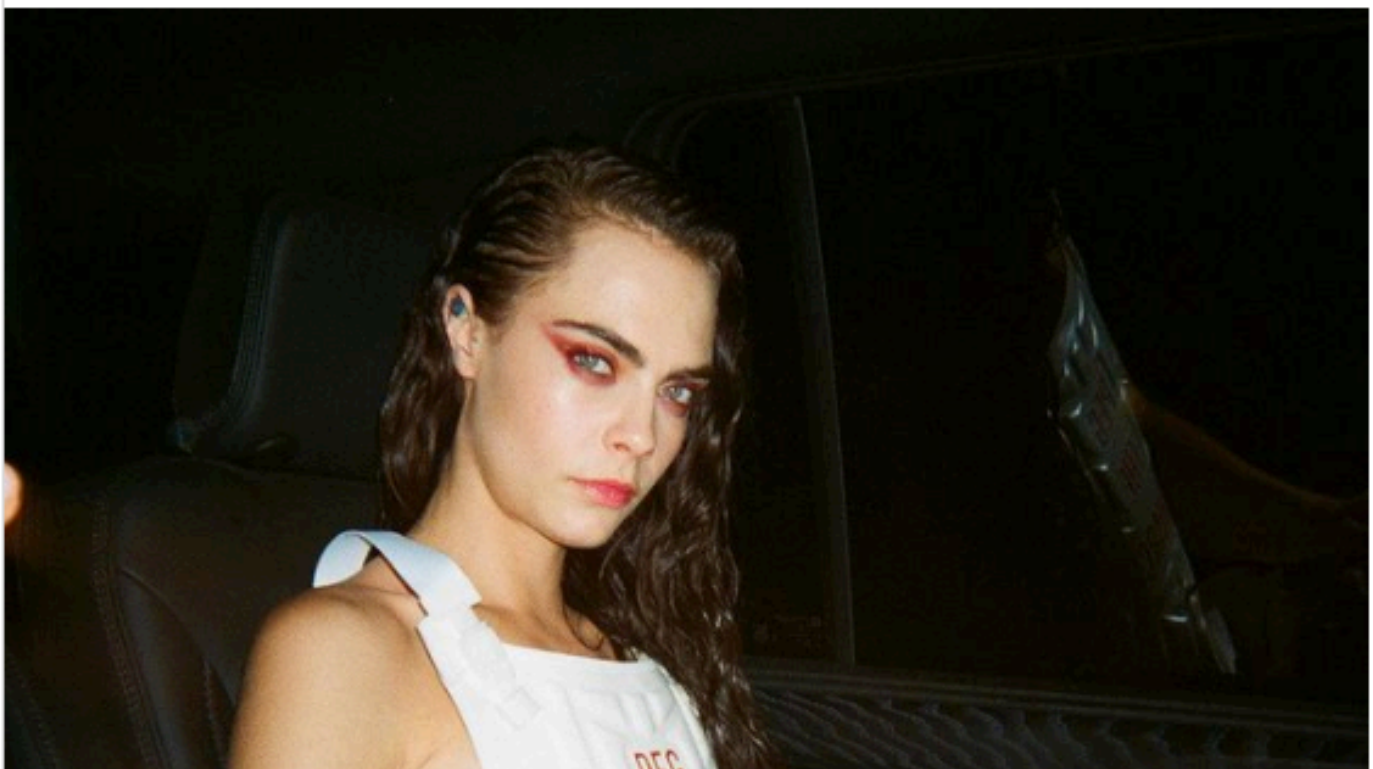
When I saw that, behind the look with which she appeared at the Couture Show of Dior, the "magic" hands of Aurélie are hidden, I could not help but ask questions about it. Somehow I got to split an interview in two. So today, we will learn about the wonderful grunge hot makeup of Cara Delevingne and next week, I will reveal the makeup secrets of Emily in the second season of the series.

The first thing I wanted to ask her was what it was like to work with Cara Delevingne. She is one of my major girl crushes and I was looking forward to finding out.



**caradelevingne**   
43.4M followers

[View profile](#)





[View more on Instagram](#)

*" Working with Cara is amazing and very refreshing in terms of creativity. Her beauty and personality allow you to think outside the box and find new ideas. " She is a woman who inspires you and can support any look , " she told me, and I went straight to the technical questions.*

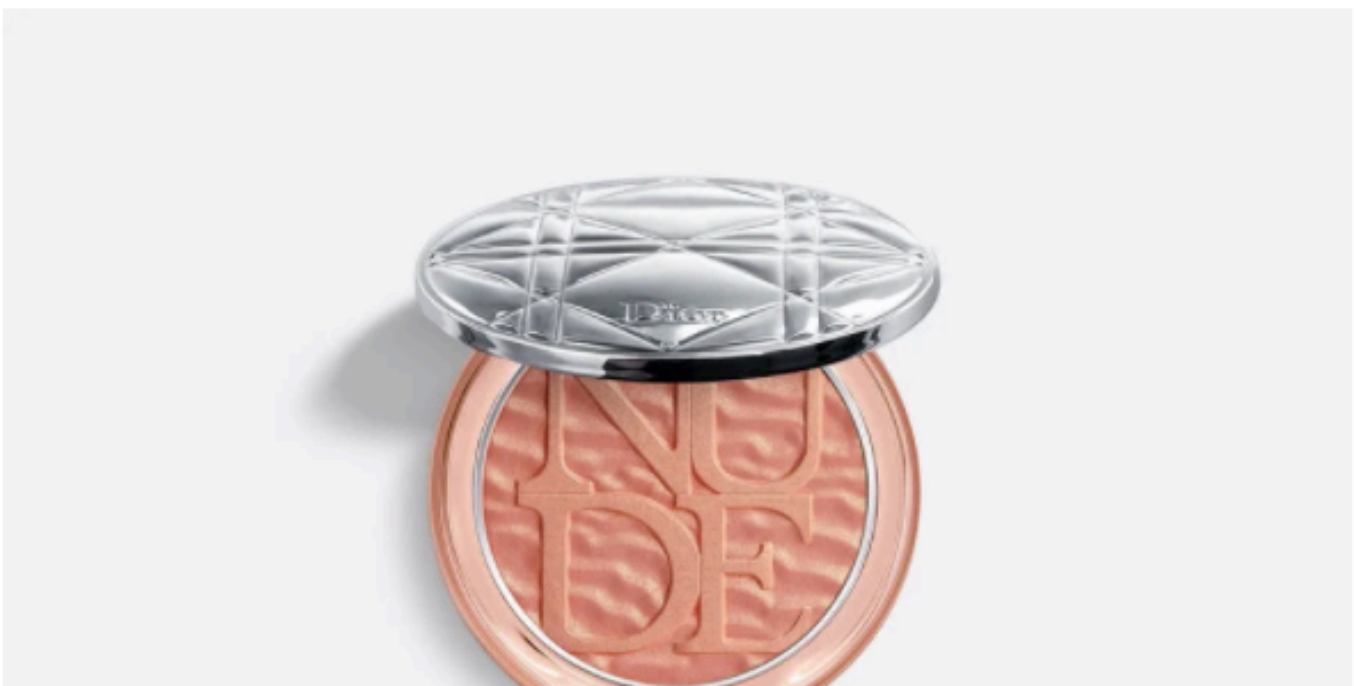
**Cara 's look had clear 90's references and was wonderful. But how can we all wear this brown lipstick successfully?**

Cara wore the Dior Rouge in shade No. 810, a very flattering brown. You can wear it adopting the grunge look as we did with Cara, with intense and well-made eyes, or you can wear it alone with a very soft and shiny make-up that will emphasize the mouth.



**What blush should we use if we decide to copy the look as a whole?**

Her look was total Dior. The blush I used was the Diorskin Nude Luminizer Summer Dune in shade No. 002. It has a very soft but muted peach shade that I find to go with all and is ideal for this makeup. Alternatively, you can warm your face with a little bronzer and apply a peach blush on top.



### **What steps did you follow for eye makeup?**

First I prepared the skin of her face and applied the Dior Eye reviver patches for 10 minutes. Next, I used the Dior Show Khôl in shade No. 099, a very intense black pencil, to create a line on the mobile eyelid.



Next, I used a little of the iridescent, burgundy shade of the Dior Backstage Eye No 006 palette, blending very well over the line and at the end I added some of the palette golden shade to brighten the look.



At that point, I wondered - and asked her - what makeup Cara prefers and the answer was "Exactly, I really like it when she wears intense and dark makeup". Although I agree (Cara is super hot with dark and intense makeup), I must add that Cara is perfect no matter what she does.





Before I leave you, let me ask you to observe her perfect hairstyle, which was done to emphasize the undercut that she has this time and I will suggest you to try the brown lipstick, it is really very nice and the shade No. 810 goes to all. Good SK queen!