

Beauty Screener

Lily Collins' MUA Worked Classic French Beauty Trends Into *Emily In Paris* Season 2



Tasos Katopodis/Getty Images Entertainment/Getty Images

By Audrey Noble
Jan. 5, 2022

Exclusive deets from behind the scenes.

Beauty Screener →



Picking a favorite beauty look from *Emily In Paris* Season 2 can be likened to picking a favorite child — a.k.a near impossible. But if Aurélie Payen, Lily Collins' makeup artist on the set of the hit Netflix series, had to pick one, it would be the season finale look at Versailles.

“Definitely the Versailles look,” Payen tells Bustle. “With [hairstylist] Mike Desir, we were inspired by the Renaissance era with a little more modern twist.”

A dark red lip, glowing complexion, and chic updo adorned with bejeweled barrettes. Lily Collins' Emily Cooper has made quite a beauty and fashion transformation from Season 1 to that stunning Versailles look. Though Emily is still making some questionable life decisions (i.e. sleeping with her friend's boyfriend, leading on a charming and relationship-material British man, etc.), fans will notice that her beauty look this season strikes the right balance of French sophistication and American boldness — something Payen was very intentional in showing.

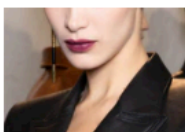
“In Season 2, Emily's makeup is still natural glam with a little more French style,” Payen tells Bustle exclusively. “I further spotlight the subtle French art of revealing and enhancing the glow of natural beauty.”

More like this



The Dewy Foundation Tessa Thompson Has Used For Over A Decade

By Kui Mwai



Why Everyone's Wearing Plum Lipstick Right Now

By Danielle Sinay



Pearlcore Nail Art Is The Latest Mani Trend You'll Want To Try ASAP

By Paris Giles



7 Makeup Artist-Approved Lipstick & Lip Liner Combos

By Kui Mwai

Redefine your day with the Bustle newsletter.

Stay on the edge of the day's top stories guaranteed to inspire, inform, and entertain. From fashion to politics and everything in between, your Monday-Friday is upgraded.

<input type="text" value="email@email.com"/>	<input type="button" value="Submit"/>
--	---------------------------------------

As for the makeup, she looked to Audrey Hepburn and Brigitte Bardot for Emily's beauty inspo. This meant keeping eye makeup soft and gentle with lip colors — deep brown shades in the daytime and bold red (which Payen says is "so characteristic of the Parisian aesthetic) — having matte finishes. The key to showing off a luminous glow on the skin was using a very light-coverage foundation.

aureliepayenmakeup ✓

Paris

View profile

View more on Instagram

♡
💬
↗
🔖

1,253 likes

aureliepayenmakeup

Life on set, laughter and fun and a little behind the scene on set
 ✨ Emily in Paris Season 2 ✨

Beauty team #lilyjcollins ❤️
 @lilyjcollins

👤 @mikedesir

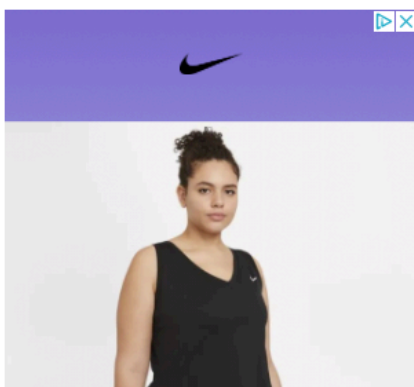
Stylist @mshangaimx @patriciafield @sarahnakhlecerutti

Makeup @aureliepayenmakeup
 Hairstylist @mikedesir

@emilyinparis @netflix

[view all 20 comments](#)

ADVERTISEMENT



Payen explains she wanted to keep Emily's makeup light in contrast with her bold and colorful fashion. "I wanted to keep a very light makeup to balance with the quintessential 'French girl' beauty," she says. "Emily's makeup is always perfectly done but faithful to the habits of French women."

Emily isn't the only one with beauty looks to admire. Payen points to Ashely Park's character Mindy Chen for some of the most fun makeup on the show. "Her beauty looks — [which are] very pop and colorful — perfectly reflect her creativity and optimism," she says. "I love the daring looks and colored tones [that are] faithful to her radiant and very fun character."



34.99 € 27.97 €
NikeCourt Victory
Retours gratuits 60 jours

And one can never count out Philippine Leroy-Beaulieu's Sylvie Grateau, whom Payen says is the character most representative of French beauty. "[Sylvie] assumes her age and feels pretty by keeping natural," she says. "I truly believe in the natural beauty of individuals and, through my work, I always try to promote a standard of beauty that is more diverse, closer to everyday reality, for whom Sylvie is the perfect example."



Netflix

If you haven't already, you can binge the second season of *Emily In Paris* on Netflix now to catch all the glam beauty looks. It will hold you over while waiting for Season 3.